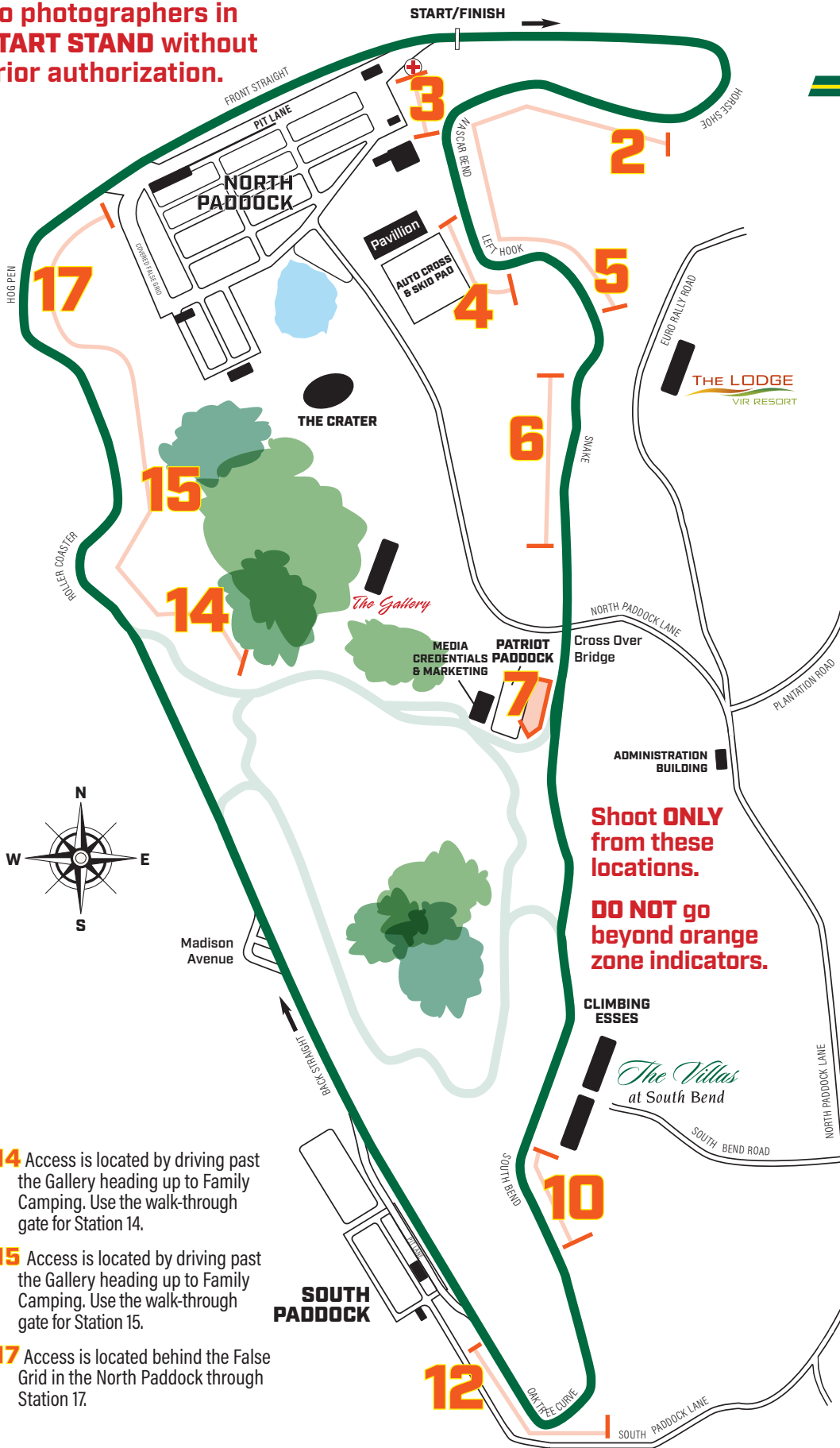


**No photographers in START STAND without prior authorization.**

START/FINISH →



# FULL COURSE PHOTOGRAPHER ACCESS INFORMATION

All access gates are indicated with a mounted sign.

Orange photographer zone indicators have been placed at ground level. **DO NOT GO BEYOND THEM**

**2** Access through gate 5 off Euro Rally Road. Golf carts cannot go past roped off area; you must walk to station 2. **Gate must be closed.**

**3** Access **ONLY** through the walk-through gate located directly at corner station 3. Foot traffic is not allowed beyond the corner of the spectator fence next to the Pagoda. **No access/exit** is allowed through the EMS parking lot—orange zone markers indicate allowed access area.

**4** Access from back of skid pad through corner worker walk-through gate.

**5** Access through gate 5 off of Euro Rally Road. Golf carts cannot go past roped off area; you must walk to station 5. **Gate must be closed.**

**6** Access through walk-through gate at Corner Station 6.

**7** Access from Patriot Course Paddock. **You may NOT cross any paved areas or access the center of the Patriot course.**

**10** Access is granted on South Bend Road which leads to the Villas. This is private property, so please proceed quickly to the golf cart trail gate for access to turn 10. Carts may be parked inside the fence line between the Villas and the Station.

**12** Access by following Pine Tree Road around to the South Paddock and enter through the walk-through gate at the Oak Tree Turn bleachers. **DO NOT** pass through station gazebo—stay on ground path!

**Shoot ONLY from these locations. DO NOT go beyond orange zone indicators.**

- 14** Access is located by driving past the Gallery heading up to Family Camping. Use the walk-through gate for Station 14.
- 15** Access is located by driving past the Gallery heading up to Family Camping. Use the walk-through gate for Station 15.
- 17** Access is located behind the False Grid in the North Paddock through Station 17.

**No photographers allowed in any gazebo/flag station.**