



Pit Crew Packet!

Education Edition

Questions and activities were prepared and approved by a local licensed PK-6 Virginia teacher to ensure they meet the Virginia Standards of Learning (SOL)

THIRD GRADE



If you were given \$5.00 to spend at the Pagoda, what would you buy? (Fig.1)

(Fig.1)


How much change would you have left over?



What states border Virginia? (Fig.2)


What region of Virginia is VIR located in? (Fig.2)

Pagoda Grill Menu




Sandwiches & Burgers

HAMBURGER	
-Single	\$7.00
-Double	\$7.50
(Add Cheese \$0.25)	
PULLED PORK SANDWICH	
	\$8.00
SPICY OR GRILLED CHICKEN SANDWICH	
	\$8.00
VIR CLUB SUB	
	\$8.50
SOUTHERN STYLE PHILLY STEAK SANDWICH	
	\$8.50




Drinks

WATER	\$1.50
POWERADE	\$2.00
SODA	\$2.50




Snacks

FRENCH FRIES / TATER TOTS	
	\$2.50
POTATO SALAD/ COLESLAW	
	\$2.50
RICE KRISPY TREAT	
	\$2.50
FUDGE BROWNIE / JUMBO COOKIE	
	\$2.50



Specialties

ALL BEEF 1/4 LB HOT DOG	\$6.50
CHILI CHEESE DOG	\$7.50
BRATWURST, PEPPERS & ONIONS	\$7.00
TEXAS FOOT LONG CORN DOG	\$4.50
CHICKEN STRIPS (3) 1 dipping sauce	\$5.50
TATER TOT NACHOS	\$7.00



Dessert

BIG ALASKA	\$2.75
BIRTHDAY PARTY ICE CREAM SANDWICH	\$2.50
BIG BOPPER	\$4.50
BUNNY TRACKS	\$5.50

(Fig.2)

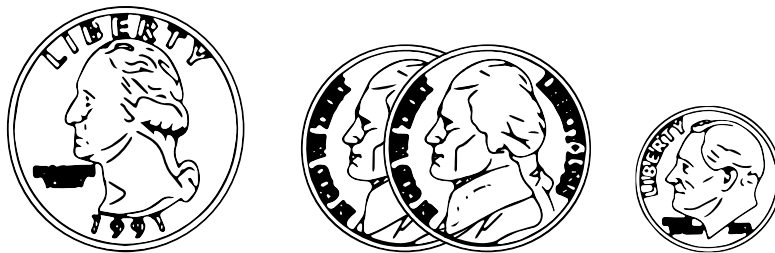


THIRD GRADE (Continued)

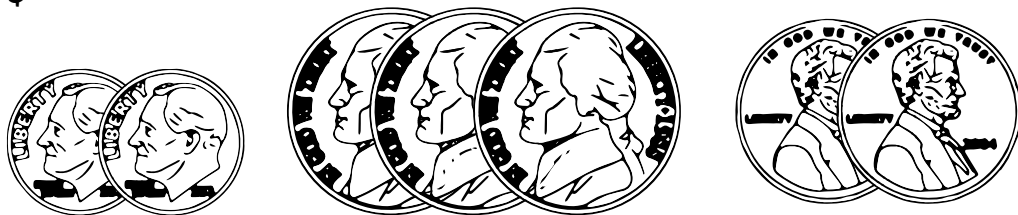
Poll your family and friends. Record how many times each of them has been to the track. Create a bar graph to represent this data.

Based off of your data, how many people have been to the track at least one time? How many people have never been to the track?

(Fig.3)
Zoey's \$



Mitchell's \$



*Connie's challenge- (Fig. 3) Zoey has one quarter, two nickels and one dime to spend at the Pagoda. Mitchell has two dimes, three nickels and two pennies. Who has more money to spend on snacks? How do you know?

(SOL 3.6) *
